



OVCEC Newsletter

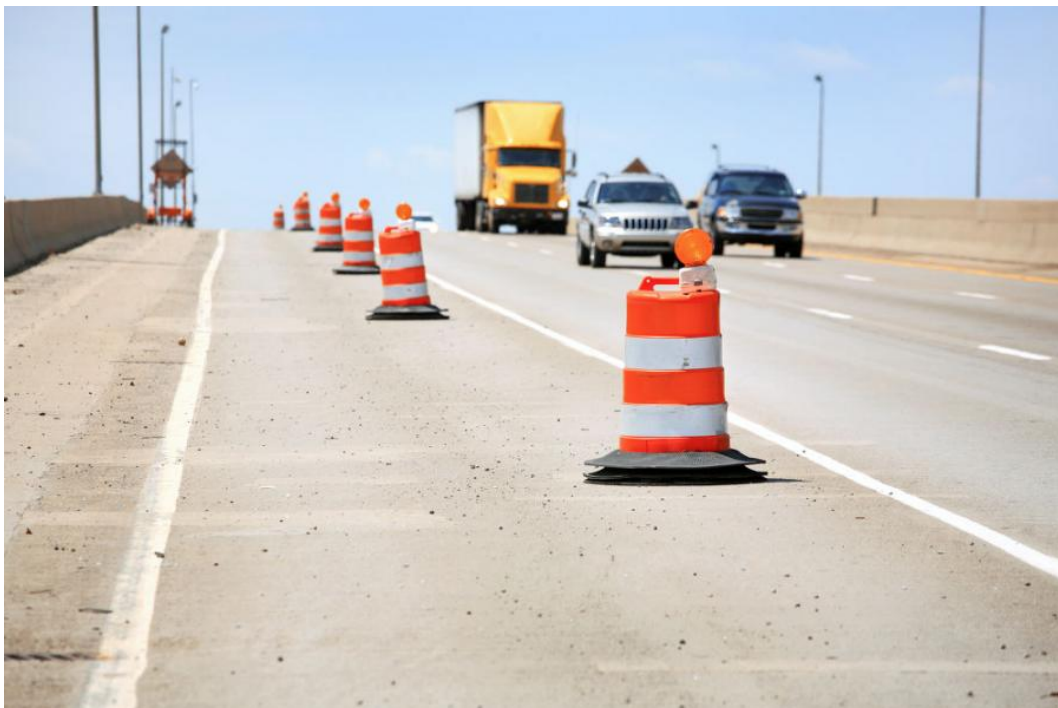
News

Range Resources to Supply Proposed Cracker Plant in Dillies Bottom

According to the Wheeling Intelligencer "Range will provide 15,000 barrels per day of ethane as feedstock for the planned petrochemical complex along the Ohio River at Dilles Bottom. The ethane supplied by Range will be utilized by PTTGC to manufacture polyethylene, one of the key resins used to produce plastics."

Read more [here](#).

Industry Hopes for Quick Action on FAST Act Extension



The transportation construction industry anticipates the one-year extension of the FAST Act surface transportation authorization, which is set to expire at the end of September. Passage of the extension looks likely after Congress reached a...

[Read more](#)

www.constructionequipmentgu...

Regional Economic Development Partnership Announces the Retirement of President/CEO Don Rigby

"Don Rigby announced that he will be retiring on December 31, 2020. The Board expresses its sincere gratitude to Don for his decades of hard work growing the local economy and building RED into the robust organization it is today.

Effective with Don's retirement, the Board has named Josh Jefferson as the organization's President/Chief Executive Officer and also elevated Craig O'Leary to Chief Operating Officer and Brian Komorowski to Chief Financial Officer."

Read the complete Press Release [Here](#).

Safety

Support & Practice Safe Digging



While many of us have adapted to working remotely, one thing that may have not crossed our minds is the importance of utility infrastructure. None of the video calls that we've all grown to love so much would be possible without high-speed...

[Read more](#)
mcsmag.com

American Industrial Hygiene Association Issues New Guidance on Keeping Construction Workers Safe from COVID-19

As the construction community deals with the challenges of responding to COVID-19, AIHA has released new guidelines. "Focus on Construction" provides employers easily implemented plans for protecting their workers.

"This document will help construction companies identify potentially high-exposure tasks and determine appropriate and useful controls," says Bill Geer, CIH, project team leader for the document and volunteer for AIHA's Construction Committee. "It addresses the types of questions that COVID-19 site safety officers, competent persons, construction managers, and superintendents may need to answer every day."

The document offers a seven-step plan for protecting workers on construction worksites using the hierarchy of controls. The plan includes a Job Safety Analysis (JSA) step to tailor precautions and controls to site-specific tasks and changing conditions.

Read the [full report here](#).

OSHA Guidelines for Construction Safety Regarding COVID-10



This guidance is not a standard or regulation, and it creates no new legal obligations. It contains recommendations as well as descriptions of mandatory safety and health standards. The recommendations are advisory in nature, informational in...

[Read more](#)
www.osha.gov

Plan Room



If you hear of a project you'd like to see in our Plan Room please let us know. We'll make every effort to get it. And as always, if you need prints or you're interested in getting access to our online plan room send us a message.

If you have any question please contact Michael at mbrownlee@ovcec.com or call the office at (304) 242-0520.



Ohio Valley Construction Employers Council

Jack Ramage, Executive Director

21 Armory Drive, Wheeling, WV 26003
Phone: 304.242.0520 Fax: 304.242.7261
www.ovcec.com